

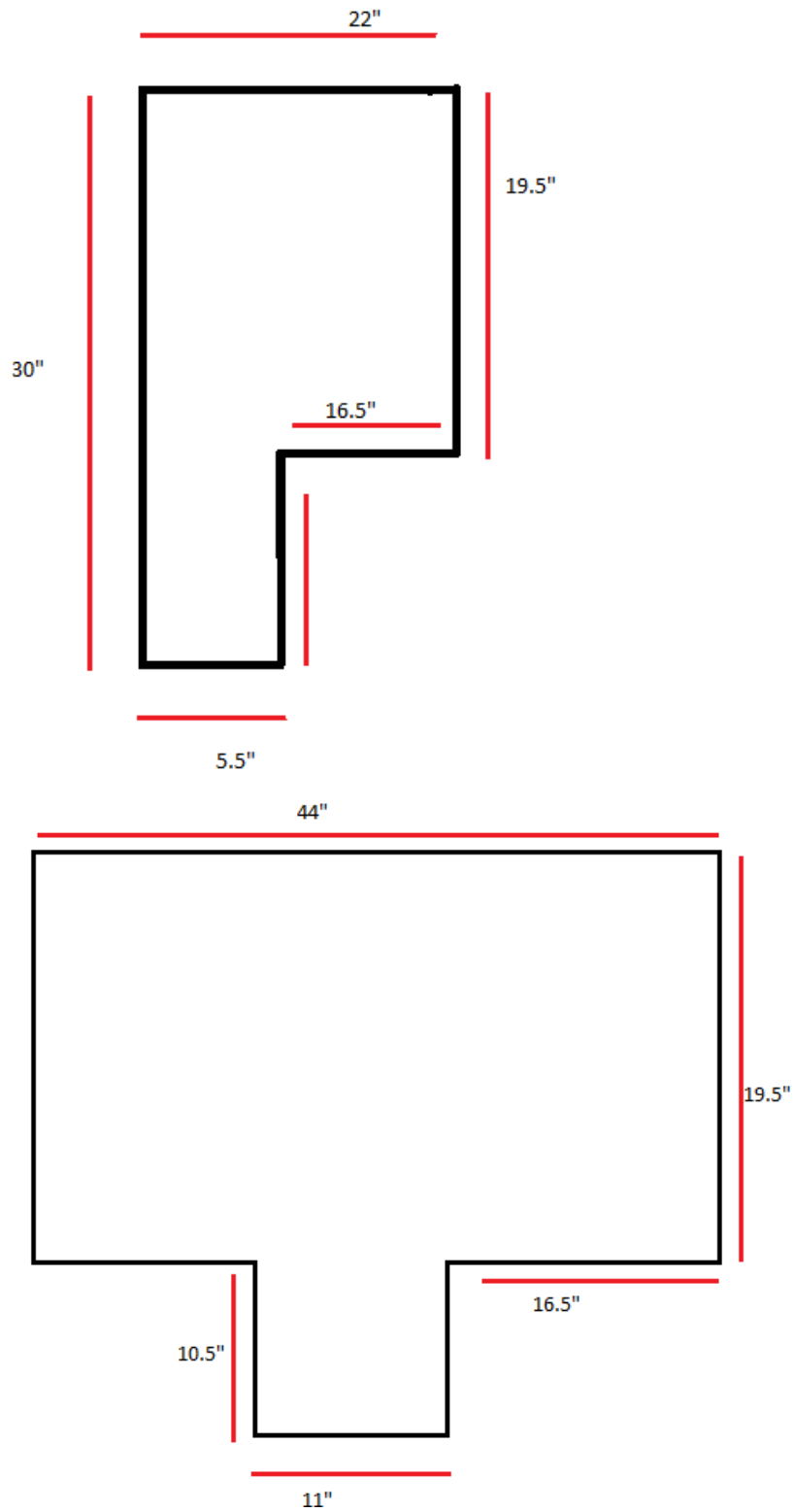
# Nappy Hanger

## Requirements

Fabric- 44" wide x36" long

Carboard and dowl - both shy of 10" Sq.

Cord or ribbon 60"long



## Instructions

Fold fabric and cut as shown on drawing.

You will now have two pieces of fabric 16.5" Sq.

From one cut an 11" square.

From the other side cut 2 No. 11" x 6" strips. Have the print going in the same direction on both.

Press 2" hem along both 19.5" sides.

Mark ½" seam on three sides of 10.5" x 11".

Place 10.5" to 16.5" right sides facing. Sew to ½" of corner. Cut 45 degree into corner. Turn 16.5" fabric. With fabric together sew to centre of 11" side. This should line up with pressed hem. If not exact adjust hem.

Repeat on second side.

Press and sew 1.5" hem on 11" sq.

Place opposite edge, right side down to front of hanger sew across front ½" seam and then down both sides. Hem goes to back. Turn out.

Sew two 11" x 6" pieces together, right sides facing and print going in right direction on both pieces. Leave 1.5" opening. Press seam open. Turn ½" seams on bottom ends. Place right sides together again and sew down both sides leaving 1" opening on one side for dowl. Use ½" seams.

Take 44" top now hemmed and measuring 40". Mark the centre. Place centre front and back together and fold in sides. This measures 10" wide. Add now 5 X 10" top.

Slip cardboard into bottom. the dowels go into the top and stitch opening. Add cord around dowl and tie ends in a bow.